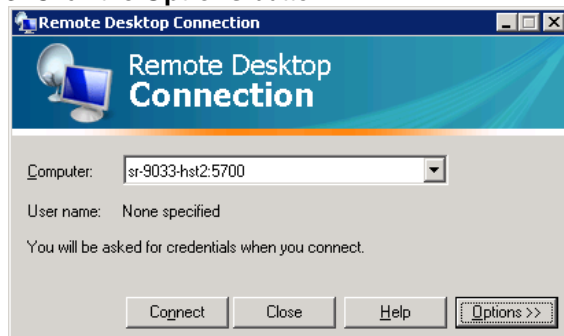


Guide for teachers to access SMART remotely from outside the SantaRosa domain

Data Processing has implemented a Terminal Server Gateway to provide access to the district's Remote Access SMART server. This new server is a more secure alternative to our current process. This new method for access is available NOW, and you are encouraged to start using it immediately. The existing method will continue to work through 15 May 2012, after that date you MUST use the below process.

The below was done using windows XP. If you're using Windows 7 or Vista it is the same but the name **TS Gateway** is changed to **RD Gateway**.

1. Open Remote Desktop Connection.
 - a. You can get to remote desktop on the start menu usually under Accessories
 - b. or click **Start** then **Run** and type **MSTSC**
2. Enter the remote server you want to connect to (**SR-9033-HST2:5700**)
3. Click the **Options** button



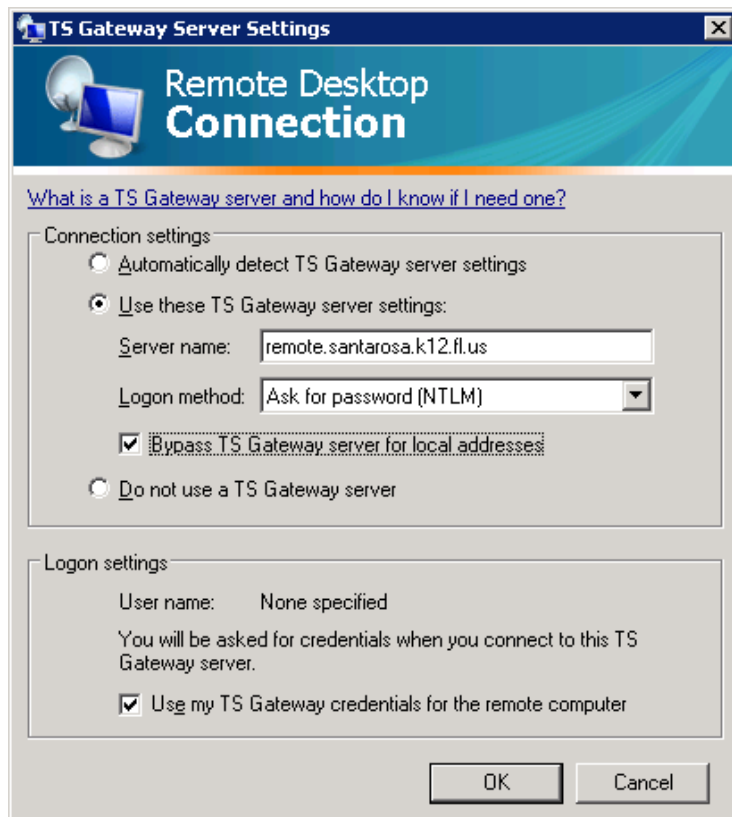
3. Select the **Advanced** Tab
4. Click the **Settings** button in the **Connect from Anywhere** section



Guide for teachers to access SMART remotely from outside the SantaRosa domain

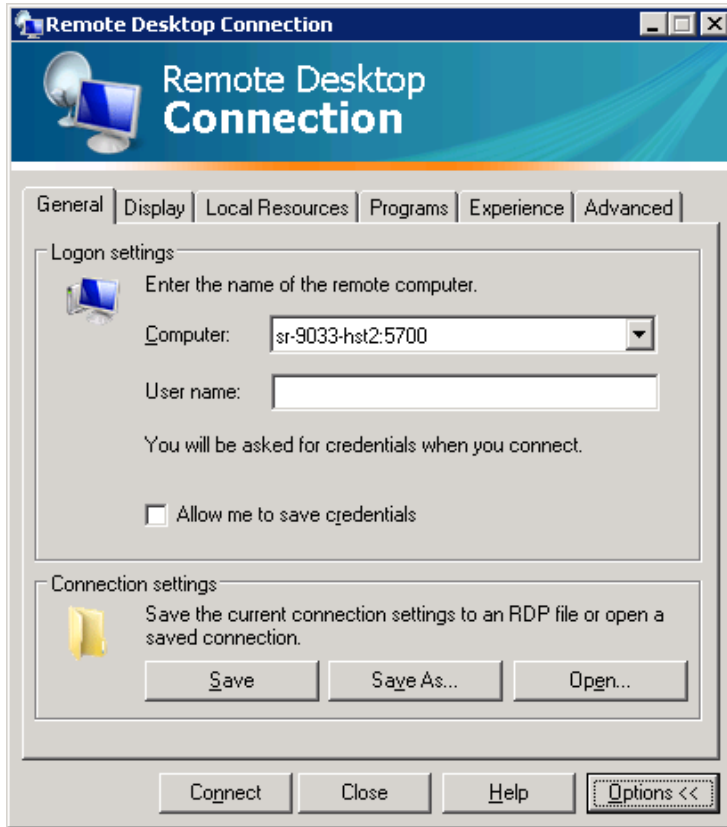
5. Configure the settings **EXACTLY** as below:
 - a. Check the **Use these TS Gateway server settings**
 - i. Server name: **remote.santarosa.k12.fl.us**
 - ii. Logon method: **Ask for password (NTLM)**
 - II. Check **Bypass TS Gateway server for local addresses**
 - b. Logon settings
 - i. Check **Use my Gateway credentials for the remote computer**
 - c. Select **OK** button

NOTE: If you don't have the TS Gateway Server settings, then the RDP client on your computer must be updated. Visit the Windows Update site.

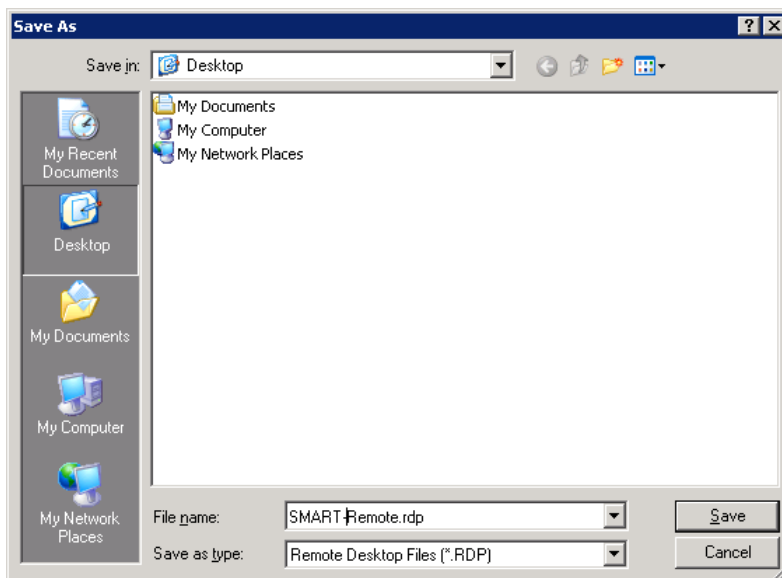


Guide for teachers to access SMART remotely from outside the SantaRosa domain

6. Select the **General** Tab
7. To save these settings select the **Save As** button



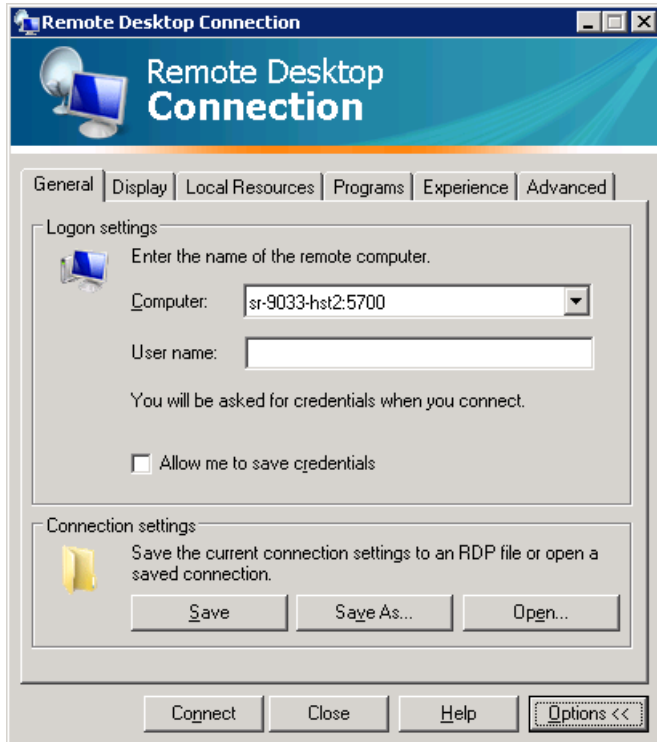
8. Select the location to save the RDP shortcut.
 - a. I selected my **Desktop**
 - b. File Name: **SMART-Remote.rdp**
 - c. Select **Save**



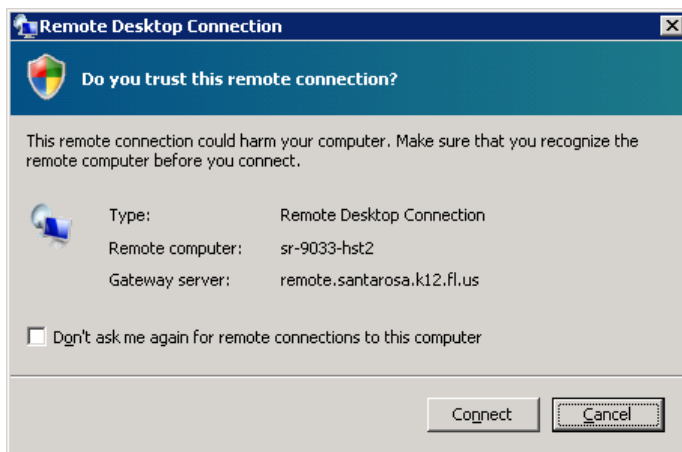
Guide for teachers to access SMART remotely from outside the SantaRosa domain

9. Once saved you can select **Connect**

NOTE: Since the RDP client is now saved to the Desktop, future access to SMART can be accomplished by running the SMART-Remote.rdp and it will have the settings configured above.



10. You may get the following notification
- You can check the **Don't ask me again**
 - Click the **Connect** button



Guide for teachers to access SMART remotely from outside the SantaRosa domain

11. Credentials

a. User name: Enter you santarosa domain username.

NOTE: You must put **@santarosa.k12.fl.us** after your username.

b. Password: Enter your password

c. Select the **OK** button



Enter your credentials ? X

These credentials will be used to connect to the following computers:

1. remote.santarosa.k12.fl.us (TS Gateway server)
2. sr-9033-hst2 (remote computer)

User name:

Password:

Remember my password

OK Cancel